



Usama S Saad , MBA (Engineering Management), PMP®, BSc Civil Engineering

Principal, Project Intervention & Recovery

With over 25 years leading high-stakes projects, I have repeatedly seen even the best-planned initiatives fail due to systemic fragmentation and a lack of centralized control. This experience led me to develop the **Coordinative Control Matrix#**, a proprietary operating system for project recovery. As a PMP-certified expert and MBA in Engineering Management, I don't just manage projects; I intervene in critical situations to dismantle information silos, enforce absolute alignment, and restore command. My single-minded focus is on turning failing projects into successes, proven by a track record of delivering over \$200M in complex projects and saving clients millions in potential overruns."

Areas of Expertise:

The Coordinative Control Matrix®

The Financial & Scheduling Core

- Cost Control & Budget Management
- Critical Path Method (CPM) Scheduling
- Risk Management & Mitigation
- Value Engineering

The Communication & Alignment Protocol

- Stakeholder Communication & Management
- Team Leadership & Development
- Project Planning & Execution MEP Coordination

The Contractual Governance Grid

- Contract Administration & Oversight
- Change Order Management
- RFIs / RFPs / Submittals
- Vendor & Subcontractor Governance

A Record of Intervention & Recovery



Engineered a Framework of Disciplined Project Control

Founded and scaled a contracting firm to over \$75M in delivered projects. Consistently achieved an average of 7% in budget savings for clients by implementing a proprietary system of rigorous financial and operational oversight4the foundation of the Coordinative Control Matrix#.



Turned Around a \$50M High-Profile Corporate Portfolio

Took command of complex fit-out projects for elite clients including Microsoft, Thomson Reuters, and Uber. Intervened in the procurement process to deploy strategic value engineering, slashing costs by 10% and saving clients over \$5M.

A Record of Intervention & Recovery (Continued)



Rescued the Schedules of \$10M+ in Fast-Paced Retail Projects

Deployed disciplined CPM scheduling and proactive material management to intervene in at-risk timelines. Successfully recovered 2-4 weeks of lost time for multiple projects, ensuring clients met critical grand opening dates without compromising budget.



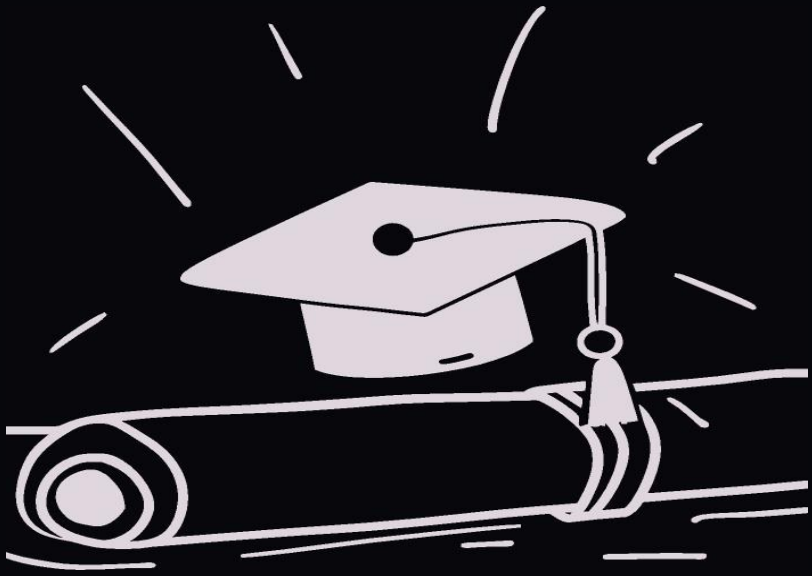
Commanded a \$7M Public Education Portfolio to Success

Navigated the complex stakeholder environment of publicly funded projects, including a STEM Addition and Wellness Center. Implemented a strict communication and alignment protocol that guaranteed 100% on-schedule delivery and secured complete buy-in from Ohio school district administrators.



Instilled a Culture of Absolute Discipline & Risk Mitigation

Established a non-negotiable standard for site safety and operational excellence. The result is a career-long, zero lost-time safety incident record across more than two decades of complex, high-risk construction environments, proving that true project control covers every domain.



Education & Certifications

- MBA, Engineering Management 2 University of Southern Indiana, USA - Oct. 2025
- B.Sc. Civil Engineering 2 Ain Shams University, Egypt - 1999
- Project Management Professional (PMP®) Certified 2022

Professional Experience

• United States

➤ Equity ECS, Hilliard, OH - Construction Project Manager (Project - Based) - Feb 2025 3 May 2025

- I led the technical review of all drawings and permits for a \$12M STEM Addition, identifying and resolving critical MEP conflicts pre-construction to guarantee on-schedule project completion.
- Reduced project delays by 10% by proactively managing commit dates and coordinating material delivery with site readiness.
- Acted as the primary liaison between school district administrators and subcontractors, fostering strong relationships to ensure seamless project execution and exceptional client satisfaction.

➤ Hanna Design Group, Aurora, IL - Construction Manager / Superintendent May 2022 - Feb 2025

- Achieved a 12% reduction in procurement costs across multiple projects through strategic value engineering and meticulous budget tracking using ProCore and MS Project.
- Successfully directed multiple, simultaneous MEP projects, including corporate fit-outs and retail developments, ensuring 100% on-time and on-budget completion.
- Collaborated with design teams to interpret complex prints and resolve site issues, streamlining project workflows and preventing costly delays.
- Maintained a zero lost-time incident record across all projects by enforcing stringent safety protocols and compliance standards.



Professional Experience

- United States (Continued)

- ACME Enterprises, Roseville, MI 4 Construction Manager / Superintendent
Apr 2021 - March 2022

Accelerated project delivery by 2-4 weeks for key retail projects by optimizing coordination between internal departments and external vendors.

Managed a fast-track renovation project at various stages, effectively resolving job site issues to ensure consistent on-time delivery and client satisfaction.

International Project Management Experience

- Egypt

CHROME for Project Management,
Cairo

Project Manager / Section Head / PMO Member

2016 - 2021

ROBUST Contracting, Cairo

Founder / Managing Director

2013 - 2016

Living in Interiors, Cairo

Junior Construction Project Manager

2010 - 2013

Gama for Trading & Contracting,
Cairo

On-Site Construction Manager

2006 2 2010

Tower Group, Cairo

On-Site Project Engineer

2002 - 2006

Technical Office for Engineering &
Contracting, Cairo

On-Site Project Engineer

2000 - 2002